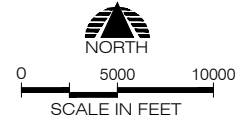
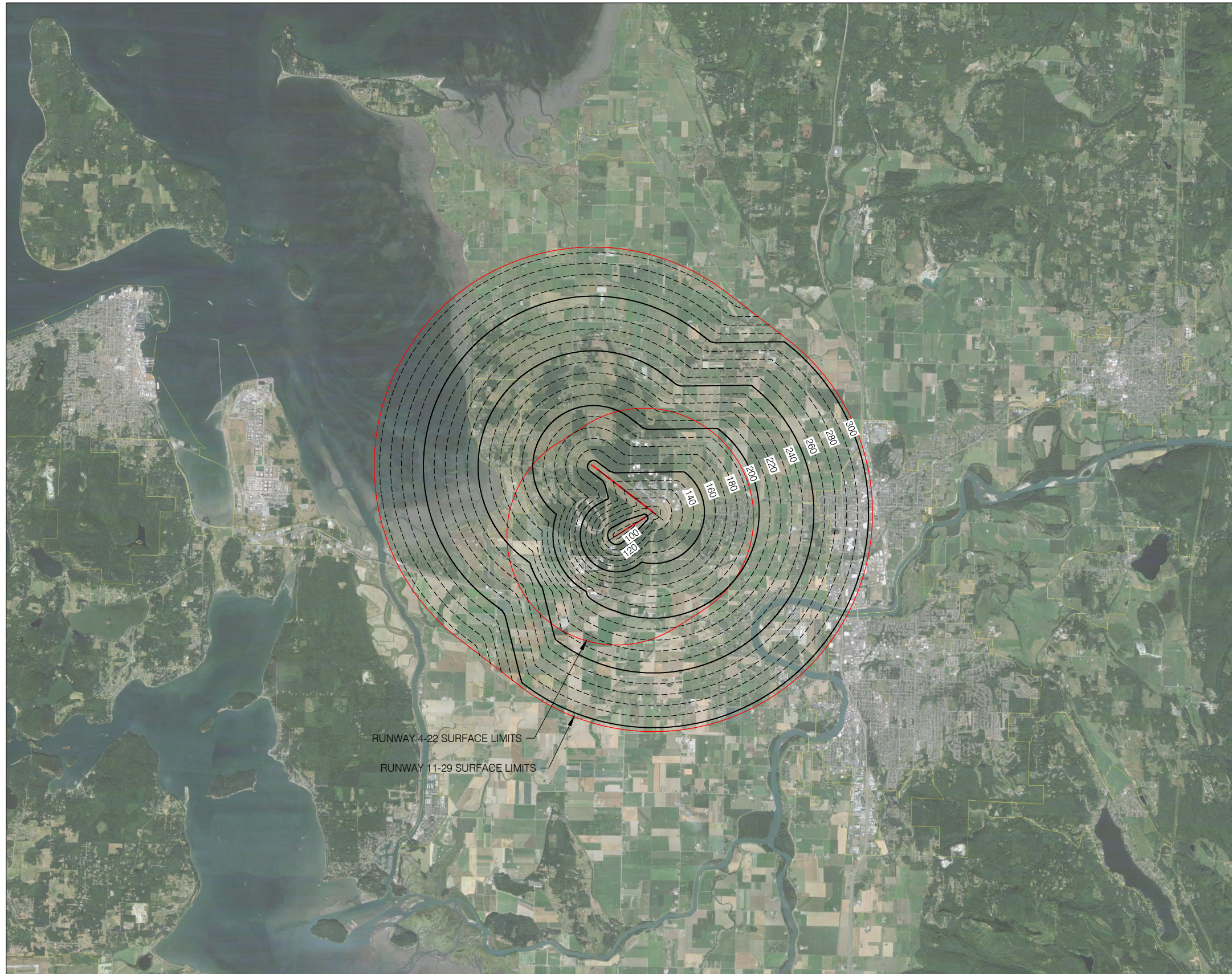


05/14/14 - 2:41pm - iwade - P:\PSC000-CLIENT\040CAD\DWG\Part-7\EXH-Part77-2014-Alteration.dwg



SURFACE FOR DETERMINING IF CONSTRUCTION OR ALTERATION REQUIRES NOTICE TO FAA (14 CFR 77.9)	RUNWAY 11-29	RUNWAY 4-22	
	DISTANCE	20000'	10000'
	SLOPE	100:1	50:1

RUNWAY 4-22 SURFACE LIMITS

RUNWAY 11-29 SURFACE LIMITS

PORT OF SKAGIT
FAA 14 CFR PART 77 UPDATE

CIVIL AIRPORT IMAGINARY SURFACES

HEIGHT LIMITS OF CONSTRUCTION OR ALTERATION REQUIRING NOTICE (CFR 77.9) MAY 13, 2014

